

Installation Instructions

Wireless Doorbell Adapter



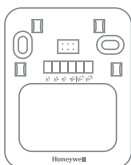
RPWL4045A2000

Preparation

In the box you will find



Adapter



Wall Plate



Wall Anchors



CR2032 Battery



Round Head
Screws

To install you will need



Phillips Screwdriver
Standard Screwdriver
Drill and 1/4 in. (6 mm) drill bit

Safety



Turn Power OFF. To protect yourself and your equipment, turn off the power at the breaker box that controls your doorbell.

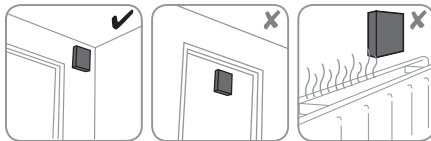
Before proceeding with the installation, please note the following safety warnings:

- Always follow the manufacturer's advice when using power tools and wear suitable protective equipment (e.g. safety goggles) when drilling holes, etc.
- Before drilling holes in walls, check for hidden electricity cables and water pipes. The use of a cable/pipe locator is advisable if in doubt.

For help please visit yourhome.honeywell.com or call 1-800-468-1502.

Choose a Location

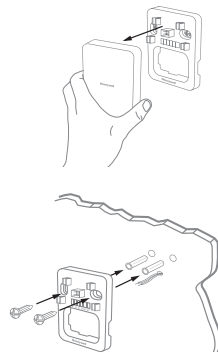
Choose a location that is not near a heat source or on something that moves (like a door).



Install Adapter

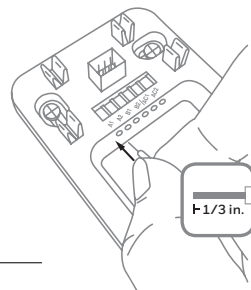
1. Pull the adapter apart from the wall plate.
2. Open the battery cover in the wireless adapter and install the CR2032 battery.
3. Remove the existing doorbell chime from the wall.
4. Screw the wall plate to the wall using the included screws and anchors (if not using the existing anchors).

Drill 1/4 inch holes for the anchors.



Wiring

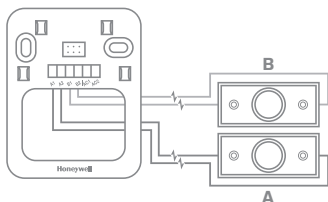
1. Make sure at least 1/3-inch of each wire is exposed for easy insertion into the wire terminals.
2. Insert the wires into the appropriate terminals. Refer to the wiring diagrams below.
3. Connect the wires to the adapter terminals. You can connect one or two doorbell pushes and transformers.



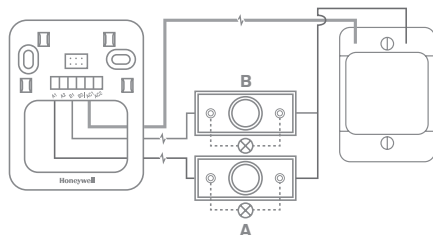
A1/A2	Connect to one push button
B1/B2	Connect to a second push button (if used)
AC1	Connect to one line voltage transformer (if used)
AC2	Not used

4. When the wiring is complete, turn the power back on.

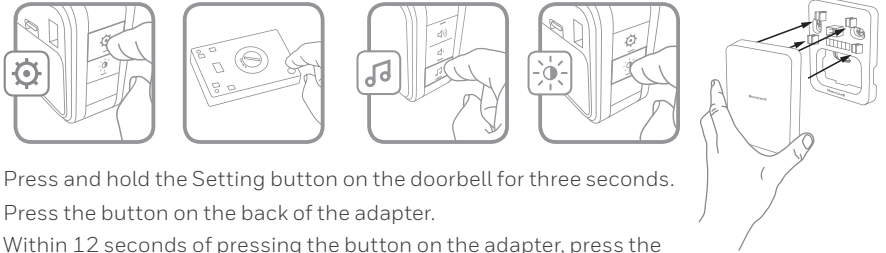
Wiring 1 (A only) or 2 (A and B) Pushes



Wiring 1 (A only) or 2 (A and B) Pushes with 1 Transformer



Pairing the Adapter and the Doorbell



1. Press and hold the Setting button on the doorbell for three seconds.
2. Press the button on the back of the adapter.
3. Within 12 seconds of pressing the button on the adapter, press the Music button to select the ring for the doorbell.
4. Within 12 seconds of pressing the button on the adapter, press the Sunlight button to select a halo light color (if available) for that doorbell.
5. When the wiring is complete, snap the wireless adapter onto the wall plate.

Maintenance

Your adapter requires no maintenance except to periodically change the battery. If using the correct battery, its life should be approximately:

- Up to 2 years; replace with CR2032 lithium battery

Low Battery Notification

When the adapter battery is low an LED on the front of the adapter gives 3 short flashes until batteries are replaced.

Specifications

Doorbell Push	
Operating Temperature	14°F to 104°F (-10°C to 40°C)
RF Frequency US/Canada	916.8 MHz
Range (open field)	350 ft. (106 m)
Sound Level (typical)	-
RF Power	<1mW
Battery Type	CR2032
Battery Life (5 activations/day)	Up to 2 years